

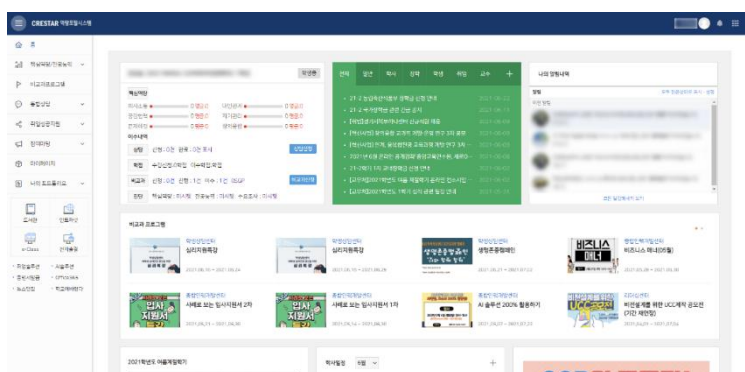
01

CRESTAR, KC University's Popular Star

By Hyo-jeong BONG & Eun-sol JO

CRESTAR, the KCU competency portal system, was launched back in September, 2020. It aims at nurturing the KCU students' six competencies, "CREST," consisting of creative Convergence, Communication, Relationship, Empathy & cooperation, Self-management, and problem-Tackling. By utilizing the portal system, the students can manage their CREST competencies.

There are four main functions of the CRESTAR competency portal system. First, check the program

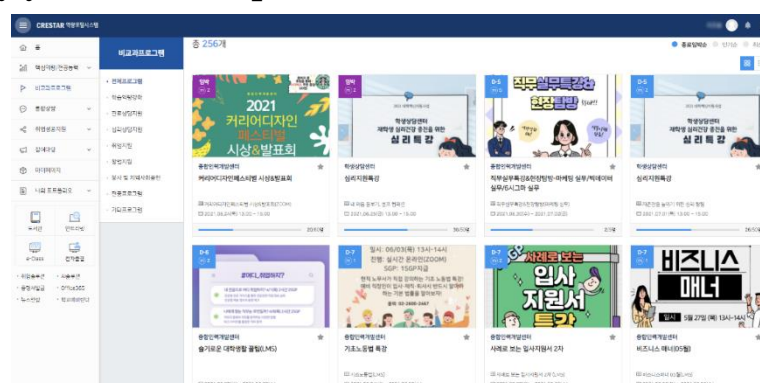


announcement, and you can apply. You can see at a glance the non-disciplinary programs which you can participate in. You can search by department, program classification, and tag.

Students can apply for various counseling services such as counseling with an advisor, employment counseling, and psychological counseling on the CRESTAR's counseling tab. Through the extracurricular program application and related competency diagnosis and management, you can check and certify what your level of CREST is. Through this CRESTAR site, students can develop their core competencies by completing many comparisons and programs starting from the freshman year.

You can apply for the extracurricular program by selecting the desired comparison and program on the CRESTAR screen and applying within the period. Each program can

enhance learning competency (CREST), and the activity history you have completed is returned to SGP.



Second, you can check the SGP, "Student Guarantee Point," which is one of the KCU scholarships. After logging in to the competency portal system, you can check the SGPs collected this semester on the first screen. The "SGP" scholarship is provided along with the non-subject activity programs.

SGP is a scholarship system that is conferred annually to enrolled students. The SGP, which is scheduled to be issued through this year's non-disciplinary programs, is set at 3,500 won per SGP, divided into first and second semesters. In the first semester, mileage is collected until the third week of July, and all scholarships are granted in the first week of August. The scholarship payment schedule for the second semester is the first week of February, and the mileage is collected and settled until the third week of January. The maximum SGP per semester that can be accumulated is 100 SGP (SGP scholarship amount 350,000 won). To prevent excessive SGP awards, SGP scholarships are awarded to students who have enrolled for fewer than 9 semesters and have earned an SGP of 20 or more.

Third, when students are seniors, they can utilize the



achievements gained through all the programs they have participated in, such as completion programs, qualifications, volunteer activities, and language grades, in their portfolios, for management, employment and advancement. CRESTAR collects and manages activities without unnecessary effort, and then you can check and use your portfolio through the output and manage your career.

As has been described, the CRESTAR provides many functions for the KCU students.

02

Extracurricular Programs

By Si-yeon BACK

What is “the Human Resources Development Center”?

“Human Resources Development Center” is a place created for the successful advancement of KC University students. It is also a school-affiliated organization that plans and operates programs in consideration of the six competencies according to the career build-up system chart.

The activities provided by the “Human Resources Development Center” meet the six competencies of problem Tackling, Self-management, Communication, interpersonal Relationship, creative Convergence, and Empathy & cooperation.

The goal of Career Build-Up is to build social awareness of talent, to improve the number of employments and the quality of employment.

Accordingly, a lot of KC university students can have diverse activities through the Human Resources Development Center.

What can we get from participating in Human Resources Development Center?

1) The full list of programs by the Human Resources Development Center:

“The programs provided by the Human Resources Development Center are an opportunity for students at KC University. They can take lectures on various topics in addition to the lectures that students are taking in their majors. Due to COVID-19, a lot of students lack the opportunity to participate in diverse activities.

“The programs during summer by the Human Resources Development Center will include various activities. As you can see, there are many useful programs.

First, “Using 200% AI Solution” helps to write a letter of self-introduction and provides a coached interview.

Second, “Wise University-life Key Points” will help to learn how to take part in external activities and clubs.

Third, “Primary job application (for those who want to work for general/food area companies)” and “Secondary job application (for those who want to work for social welfare and counselling psychology)” help to write a letter of self-introduction.

Fourth, “Business Manners” class helps to learn business manners such as sending official documents, exchanging business cards and handshakes, etc.

Fifth, “Basic Labor Law” is a program where a Certified

프로그램 (LMS)	내용	SGP
시뮬레이션 200% 활용하기	더이상 혼자서 자소서, 면접 준비하지 마세요! 우리학교만의 시뮬레이션으로 자소서 첨삭, 면접 코칭받는 기회를 전수받는 특강!	2SGP
슬기로운 대학생 생활 꿀팁LMS	황금같은 대학생 생활, 그날 놀러보내지 말자! 대외활동, 동아리 등 스펙쌓는 방법 공개!	2SGP
사례로 보는 입사지원서1차 대상: 일반기업/식품 분야 취업 희망자	합격한 자소서는 어떤 점이 다른지 알아보고 필승! 자소서 준비하는 시간!	2SGP
사례로 보는 입사지원서2차 대상: 사외복지/상당심리 분야 취업 희망자	합격한 자소서는 어떤 점이 다른지 알아보고 필승! 자소서 준비하는 시간!	2SGP
비즈니스매너	공문보내기, 명함예절, 약속예절 등등! 선배들이 일일이 알려주지 않는 필수 직장인 매너를 배워보자!	1SGP
기초노동법	일하는 나는 내가 지킨다! 현직 공인노무사가 들려주는 알아두면 좋은 기초노동법 전격 공개!	1SGP

Public Labor Attorney teaches about basic labor acts.

If students participate in these programs, the students can not only receive scholarships, but also learn many useful things. Applications will be due by June 30 via the link on the school's portal, CRESTAR. More details can be found on the portal platform.

2) Gangseo-gu's support project for the unemployed youth

Hosted by Gangseo-gu, this program supports business for young people who have not been employed due to COVID-19. As the number of unemployed young people increases due to the COVID-19, many young people who graduate from university are having trouble finding jobs.

Young people aged 19 to 34, living in Gangseo-gu and within two years of graduating from the final academic institute can apply to this youth employment incentive project. The subsidy is 500,000 won per person, and applications can be submitted online.

I hope that many young people in Gangseo-gu, who have been damaged by not being able to get a job, will get help through this program.

3) Professional talent group

The professional talent class provided by the Human Resources Development Center is a program that helps students who want to get a job in a specialized field.

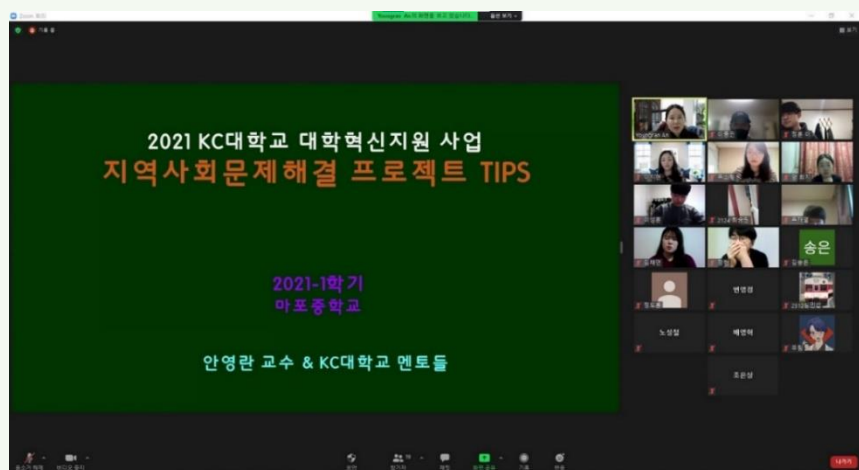
Nowadays, there is no concept of a lifetime job unless you are a public servant. Therefore, there are many students who want to work for the government.

The primary purpose of the professional talent group is to aid preparations for public officials, accountants, and tax accountants. Another objective of the program is to guide students to improve the employment rate of schools by helping them choose their career directions in the early semester.

Students may receive support in various fields, such as certified public accountants, tax accountants, tax officials, social welfare officials, etc.

The selection method of the professional talent group is based on the GPA and the English score. If you want a professional job or a position at the government after graduation, you might as well pay attention to your GPA and English score. Only those who are well prepared can grab the valuable opportunity to enter the talent group.

03 “English Play Mentoring Program” : The Outreach of the KCU Extracurricular Activities



By So-hyeong YU

In the first semester of 2021, the students from the G2 Big Data Management Department, including English and G2 International Language majors of KC University participated in the “English Play Mentoring Program” under the guidance of Professor Young-ran An, who is in charge of English at the Department of G2 Big Data Management.

This English play mentoring program was conducted for Mapo Middle School students as part of the “Team-based Interactive Problem Solving” (TIPS).

This program encourages professionalism by providing university students with opportunities for field experience and service learning as well as strengthening their ability to solve problems through creativity. In addition, it provides middle school students in the Gangseo-gu area with the opportunity to explore their career paths and develop general competencies.

The university student mentors were matched one on one with middle school student mentees. The mentors adapted the script to suit the level of the mentees and worked with the mentees on their pronunciation and acting in general.

The play was “A Midsummer Night’s Dream” by William Shakespeare.

The Wheel interviewed Chae-yeon Kim, a university mentor and Woo-lim Lee, a middle school student mentee who played Oberon and Bottom in the play.

Q: Do you have any special reason for having joined this program?

Chaeyeon: I have participated in the English Drama Festival as an extra. Although I had a hard time, I remember it is a very interesting experience for me. At that time, I learned the fun of the play, and the fear of speaking in English was somewhat resolved. If I had a chance, I was willing to participate in an English play again. And I wanted to share my good experience with other people by introducing them English plays. Then I heard about the mentoring program of the English drama and joined it.

Woolim: The reason why I participated in the English play was that I thought it would be fun to be immersed in the role and talk about the roles with my friends.

Q: What is the most memorable episode of the entire activity?

Chaeyeon: My mentee is a very lively person, but when I first met him, his answers were short and there was no reaction. I was very worried about my mentoring because I tend to feel awkward as much as the other person feels. Then one day, he suggested that we talk about what we like instead of taking a break. I told him what I like and he asked me what I wanted to be later. He seemed so cute, but spoke in a mature way. After hearing my answer, he was talking about what he liked and what kind of job he wanted to have when he grew up. I think it would have been awkward if we hadn't had such a moment. We have the same interests, so we feel like we got closer faster. He gave off his energy and answered the most every week, and he didn't neglect English plays. Therefore, I really want to cheer for him.

Woolim: At first, it was burdensome to play the two characters, but it was good that the two mentors led well. In particular, Bottom was impressive because he was a humorous and ridiculous character. Throughout the rehearsal, I tried to play the characteristics of the character well, and the most memorable thing was that I received compliments from the teacher.

Q: What benefits did you receive as a result of participating in the program?

Chaeyeon: The best thing about participating in this mentoring program was that I was able to break the prejudice that middle school students would lack responsibility. Especially, I felt rewarded to see the mentee who I taught doing his best. As a mentor, I learned how to improve students' learning and then I tried to foster their interests and build rapport. If I have a chance, I would like to participate in the



mentoring program again.

Woolim: I could learn English in an interesting way through plays and correct my English pronunciation through the mentoring. In particular, I was told that my acting improved a lot.

The G2 Big Data Management Department and the other majors of KC University have conducted the TIPS and other extracurricular activities for the past several years and the local school participants were satisfied with those activities and the results.

The English Play Mentoring Program can be said to have not just served as a stepping stone for both mentors and mentees to develop their English skills, but it also has had the effect of killing two birds with one stone helping them improve their cooperation, leadership, and problem-solving skills.

The International Education Exchange Institute at KCU

By Sang-woo KIM

Back in May 2020, the International Education Exchange Institute opened at KC University (KCU). The institute mainly provides education for international students, enrolled at the university. Its vision is “Cultivating global multidisciplinary creative outstanding leaders who lead the hyperconnected society.” These outstanding leaders are qualified with “practical and integrated talents.” To develop these talents, the institute has arranged many programs like academic learning support and communication ability improvement.

There are two kinds of tracks at the institute: English and Korean. When applying, international students have to choose one of the two tracks. There are currently over 500 students registered for the two tracks. Among the international students, undergraduates belong to the Department of G2 Big Data Management while graduate students, Department of Global Business Administration. The students are from Nepal, India, Mongolia, Bangladesh, Sri Lanka, Cambodia, Vietnam, Japan, and China.

The International Education Exchange Institute provides numerous extracurricular programs, which are helpful in learning major courses. Dr. Paul G. Park, professor of G2 Big Data Management, serves as the head of the institute. He said, “Our institute wants to improve abilities of international students through advanced curricula and

learning programs. The curriculum results in the capstone design, which utilizes AI analysis equipment and embodiment tools in cahoot with Korean companies.”



Aside from the learning programs, the institute has been trying to develop many other activities such as a buddy program. The buddy program, as of now, is the only way for the Korean students to interact with the international students. A Korean student is assigned to one or two international students. The students, in this mutual relationship, exchange their cultures and languages. This extracurricular activity helps both international and Korean students to broaden their horizons.

The International Education Exchange Institute has a plan to establish a global platform university “R & D center” with fifteen universities in fifteen countries, in preparation for the global ages. In fact, discussion is already underway with five universities overseas. Director Park would like to tell both Korean and International students that “We should have global leadership in the upcoming age. Communicating and collaborating with international students allows you to improve your values and leadership required by the globalization era. I hope everyone cooperates with one another without discrimination or prejudice. The International Education Exchange Institute will help you be a great global leader.”

The Seoul Campus

Town Project: 2021 Programs and Activities

05

By Ji-hae HWANG & Hyeon-jeong SON

The “Seoul Campus Town” is a project to build a local community where universities, young people and local residents coexist and prosper. It operates the university-local joint festival through cooperation with universities and regions, specialized start-up programs, and regional cooperation. The project aims to foster start-ups by

viewing universities as a small complex city in Seoul where education, jobs, housing, and culture thrive together.

It dreams of stabilizing housing, regional cooperation, revitalizing commercial districts, and cultural characterization. Therefore, the Seoul Campus Town makes each university set up the campus town start-up spaces to serve as a hub for the start-up culture. In particular, each campus town school houses and supports several start-up teams, and the KC University Campus Town also has several start-up teams.

KC University's vision for the Campus Town Project is to realize local win-win values through fostering start-ups and providing creative education programs. In other words, the purpose of the KC University Campus Town, the only university in Gangseo-gu, is to upgrade the community ecosystem with the goal of building the creative education platform and establishing a hub for supporting start-ups.

The campus town's programs can be divided into the fields of start-up development and creative education regional co-prosperity.

First, the field of fostering start-ups aims to establish and spread a support system for fostering young start-ups. Based on this aim, the field of fostering start-ups supports the following projects. First, it creates a support facility for start-ups. The purpose of this project is to create a physical space for supporting start-ups in the Gangseo-gu area. If you are selected as a young entrepreneur at KC University, you can get a free space to move in: There are KC Makers at the university campus and Youth-up Center outside the campus.

Second, it offers support for fostering start-ups. Various programs are being operated to strengthen the capacity to support start-ups. For example, there is a global selling education program for college students and local residents. 'May Day Demoday: Startup IR Program' and 'Local Win-Win Start-up Incubation Program' are also included in the start-up support programs.

Finally, the department which is charge of the project also operates a program to find a start-up team and create a foundation for revitalizing the start-up team. This includes a start-up competition and the a start-up business idea contest. The Campus Town Project helps revitalize the local economy by fostering and spreading start-ups through these programs. It has the advantage of providing low-cost, high-efficiency start-up services, and of being able to support start-ups using university facilities and professionals. These efforts can activate the fostering of innovative start-ups in the region.

Next, the field of creative education regional co-prosperity is called "UFO, The Dream-based Educational Ecosystem

2.0." "U" stands for "Stand Upon Dream." For this, KC University Campus Town Project is focusing on securing professionals by learning coaching/mentoring specialists training programs.

"F" stands for "Fly For Dream" and is composed mainly of programs to explore career paths. Participating in the Talk+Talk Community and Debate Championship programs, which are English speaking programs, can improve foreign language skills and lead to the growth of talent suitable for the global society. There is also training in software coding, which is essential during the Fourth Industrial Revolution. Robot Coding Block Travel program is such an example.

Finally, "O" means "Hang Onto Dream." One of the programs for this is Thought-Dream e-Learning. This program provides a variety of learning contents based on the Learning Management System (LMS). These creative education support fields narrow the educational gap between regions in that it broadens the target of various types of programs and provides free support. This enables realization and diffusion of the dream-based holistic education.

The KCU Campus Town Project intends to realize the value of co-prosperity in the region by providing many programs and activities, which are to help the local community thrive via fostering entrepreneurship and establishing an educational ecosystem.

If you are interested in starting a business or boosting the learning capabilities, you should not miss the KC University Campus Town Project because it can help you take a new step toward starting a business and enhancing your competencies.

06 The Unification Enterprise at KC University

By So-won YOON

Korea is the only divided country in the world. We have suffered from division and we are aware that we need a solution. KC University has taken part in finding a solution through the Support center for South-North Integration (SSNI).

An interview with Professor Woo-Jun Kang has been conducted, who is currently the acting head of the project by KC University on national unification of Korea.

The South-North Integrated Culture Center, under the Ministry of Unification, has been built in Magok, Gangseo-gu, and it started to operate many activities and programs, in which KC University has been actively participated thus far.

North Korean defectors have a hard time settling in South Korea. It is because lifestyles and social aspects are very different. The Ministry of Unification implements many policies to help such people settle in the Republic of Korea. KC University, among other projects and programs to help the North Korean defectors, has been engaged in the program related to the “Communication Support.”

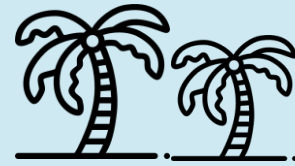
The South-North Integrated Culture Center, located in Magok, is close to the university campus. On March 27, 2020, the project called “Inter-Korean Community Communication Culture Project” was launched and entrusted to the South-North Integrated Culture Center, and KC University got to be in charge. The project is in the form of a consortium, i.e., universities and private organizations, with KC University working together with the unification movement private organization “Saejo Committee.” and peace education non-profit company “Peace Momo.” The main purpose of the project is to reduce the gap between North Korean defectors and residents in South Korea and to narrow the gap between each other’s thoughts and cultures.

KC University is the only four-year university in Gangseo-gu, and has been steadily supporting North Korean defectors since its establishment of the SSNI back in 2008. Is there any activity in which students can participate directly or indirectly at the center? Professor Woo-Jun Kang said, “In order to proceed with the project at the South-North Integrated Culture Center and achieve results, universities, private organizations, and students’ activities must be harmonized. One of the most representative activities by the students is the ‘Student Supporters’ program. This activity allows students to gain field experiences and get to have insight into the issue of inter-Korean unification. If you’re interested in this activity, you can check the application notice and apply.”

The South-North Integrated Culture Center is engaged in various activities on inter-Korean issues even at a time when we are not aware of them. How about having more interests and trying to participate in these activities? The new experiences will bring forth a new perspective on the issue of unification of the peninsula.

The Wheel 9-1

Publisher	Gil-Hyung LEE
Supervisor	Young-Ran PARK
Editorial Advisor	Youngran AN
Proofreader	Eugene HWANG
Editor-in-chief	Ji-hyun LEE



Reporters & Editors

Seong-eun PARK	Ji-hae HWANG
Si-yeon BACK	Hyeon-jeong SON
Seo-jin KIM	So-hyeong YU
Jung-hoon LEE	So-won YOON
Sang-woo KIM	Hyo-jeong BONG
Eun-sol JO	

The KCU Campus and its Vicinity: For the Sake of those who could not Come to School due to COVID-19

By Seo-jin KIM & Seong-eun PARK

Some of the buildings at the KC University campus are: Main Building (본관), Science Building (과학관), Bible Building (성서관), SG Innovation Hall (SG 혁신관), Truth Building (진리관), Creativity Building (창의관), Baptism House (침례탕), and the Library (도서관).

You can see the “Creativity Building” when you enter the school. The Creativity Building is an old building like any other building. In the building are the Information Support Center, the Institute of Continuing Education, the Office of Juridical Person, the Department of University Innovation Support Project, and a lecture room. It also has KC Makers at the basement, in which some start-up businesses (by the Campus Town Project) are located and students can learn and practice 3D printing.

07

“Science Building,” built in 2017, is rather newer than the other buildings. There is a lot of space for students within the “Science Building.” To make a brief introduction, at the laboratories for the Nursing Department the nursing majors practice their work with the hospital-like facilities. Meanwhile, at the laboratories for the Food and Nutrition Department we can see various kitchen tools and appliances that have been cleanly maintained.

Third, Truth Building has a student counseling center and professors’ offices, and there are male and female dormitories on the second and third floors. Dorm rooms are assigned according to how far the students have to commute. Usually, two students are assigned to one room. On the first floor, the Student Counseling Center, professors’ offices, and the dormitory lounge are located. On the basement floor, there is a gym where students can work out. Students with psychological anxiety and worries can receive counseling at the Student Counseling Center. Next, the dormitory lounge is a place where students living in the dormitory can gather and take a rest.



▲ The Lounge of SG Innovation Hall

The fourth is SG Innovation Hall. The Center for Teaching and Learning and the Remote Class Support Center are located there. The Center for Teaching and Learning has been running a variety of extra-curricular programs, such as small group study, tutoring, reading and writing contests, lectures on learning tips, etc. The Remote Class Support Center has been recently established to support e-learning classes. There are study rooms, called a “study cube” for the students reserve and utilize for their group study. Owing to COVID-19, the students cannot use these study rooms as often as before.

Fifth, there is a library, where students can read and borrow books. The KCU Library consists of two floors. On the first floor, there are a library office and a seminar room. On the second floor are there reading rooms. You need a student ID to enter the library, and COVID-19 only allows us to borrow books.

Sixth, there are a café and a convenience store that. The café is now open although not many students are visiting these days because of the non-face-to-face classes. The café has a large selection. The convenience store next to the café has enough seats for many students, unlike the local convenience stores we go to.



Seventh, the Bible Building has an auditorium where the convocation and matriculation ceremonies are held and the chapel is given. There is a practice room and an opera room, where students of the Music Contents Department practice singing or musical instruments. Also there are student council rooms, club rooms, and a restaurant on the first floor. Right next to the restaurant, there is a book café where the students study individually or in groups. The book café facilities are up-to-date, and you can also bring meals from restaurants and eat there.



▲ The Bible Building Book Café

Finally, the Main Building has PBL rooms on the basement floor and a lounge on the first floor. There is a reading room on the second floor, and the rest zone on the 3rd floor is popular among many students.

The rest zone on the third floor is a space where students can order delivery food for their meals. There are professors’ offices on the fifth floor. There are graduate school seminar rooms and an office on the third floor. Classrooms are on the second, third, and fourth floor. Some department offices are on the second floor, where you can get a lot of information about the departments. On the first floor of the building, you can find the president’s office and the school administration offices. There are computers in the lounge on the first floor, where students can search for information, print up things, make copies, and study comfortably.

In addition, our school's playground looks very much like the ancient Roman amphitheater or Pamukkale Theater in Turkey. It’s much smaller than the Pamukkale Theater, but it’s just beautiful. Also, KC University is the most beautiful in April when cherry blossoms bloom. Beautiful flowers such as cherry blossoms, azaleas, and forsythias are in full bloom, so not only students but also residents living nearby come to see the flowers.

There are many good restaurants near KC University. To recommend one by one, first of all, ‘the Rolli Gimhap Restaurant’ (롤리김밥집) is a place where many students often visit and order various items such as *tteokbokki* and *ramen*. The writer’s recommendation is a bowl of rice served with toppings. Secondly, ‘Mrs. Cho’s Tteokbokki Restaurant’ is the closest restaurant to the school and you can eat cheaply there. There are not only students but also people at a nearby welfare center, who sometimes order *tteokbokki*. Next, ‘Wondang Gamjatang’ and ‘Sushihon’ are located next to the Gangseo-gu Office. Group activities or other small group gatherings visit Wondang Gamjatang, and students who live alone or live in dormitories usually order sashimi rice or rice with cheese roe from Sushihon.

Also, 'Tomoru Restaurant' is a pork cutlet restaurant that only people who have been there know about. There is a lot of cheese in the cheese cutlet, so it is really recommended if you like cheese. Also, a place called 'Coffee AM' is famous for its delicious *dalgona* coffee. It is close to the GangSeo-gu Office and has various drinks and shaved ice.

Only a few have been mentioned, and hopefully you can go and find more good places yourself.

08 How the young generation accepts and prepares for the post-pandemic

By Jung-hoon LEE

In early 2020, an unwelcome guest, "Coronavirus" visited South Korea. Even outside of Korea, the guest swept the world. This chaotic incident changed our society, life, and environment. Schools, firms, entertainments, many other institutions have been locked down. Students have been prohibited from going to school and businesses have moved online. Due to the policy of "social distancing," people could not have face-to-face gatherings.

As for colleges and their areas, many of the restaurants and stores went bankrupt because they chiefly depend on the student consumers, who did not go to school due to the school lockdown. However, there are alternative ways for these businesses to sell their products; E.g., they can sell them via delivery service or online. Still, there is another problem, which does not seem to have a solution, i.e., entertainment and sports.

The "HongDae" district, which is named after Hongik University and its vicinity, is well known as a college students' playground. In this area there are numerous restaurants, cafés, and clubs. Clubs, in particular, are the place, where many artists perform. However, during the COVID-19 pandemic, many of those clubs have been shut down or run with a limited number of customers and with a time limit. Since clubgoers, mostly consisting of college students, cannot gather to enjoy the performances, the venues have been suffering.

One of the famous rock clubs called "FF" has changed a lot since COVID-19. A band called "Interzone" who continuously performed at "FF" for about a year has felt

many changes since January, 2020. The leader and bassist Son ChangHyun says, "Before COVID-19, on weekends there were at least triple the number of customers, but now there's barely 20 people." As everybody knows all kinds of clubs are busy on weekends. Many indie bands or underground artists perform at clubs to promote their music. It is the only way to promote their music but now because of COVID-19 this cannot be done anymore. The bassist also added, "This situation is actually the major reason why we are losing motivation."

There are not many places to go: Gyms are closed, and traveling is limited, as well. Hiking cannot be an exception. Interestingly, however, there appeared a new phenomenon when it comes to hiking. This activity, which has been usually confined to the old generations, has become popular among young college students.

Lee ChanHo, a college student who has been hiking even before the pandemic, has mentioned lots of changes after the pandemic. He said, "If you compare the numbers before and after Coronavirus, the number of students has increased." Lee also added, "Since many people cannot travel abroad, people seemed to turn their eyes to a new hobby like hiking."

We may think that COVID-19 has brought many changes for the worse. Many places including schools and entertainment venues, have been restrictively open, and people rarely meet with one another. However, it appears that people, in every corner, are doing something to break through the Coronavirus pandemic. We, college students, have already perceived the future after COVID-19, and we know that there should be some actions from our, younger generation's end.

